

## Health impact evaluation of the Vila Viva program in Belo Horizonte, Brazil

**Amélia Augusta de Lima Friche**

**Associated professor at School of Medicine, UFMG**

**Co-PI: Waleska Teixeira Caiaffa**

**Professor of Epidemiology and Public Health**

**Investigators:**

**Maria Angélica de Salles Dias, Veneza Berenice de Oliveira, Aline Dayrell Ferreira Sales, Elis Borde, Amanda Cristina de Souza Andrade, Nelson Gouveia, Lídia Maria de Oliveira Morais, Dário Alves da Silva Costa, Uriel Moreira, Camila Vaz, Débora Coelho, Michelle Silva, Amanda Magalhães**



*About us: Observatory for Urban Health in Belo Horizonte (OSUBH)*

- Partnership (since 2002) between UFMG and BH City Council
- Created by academics and city technicians from the City Health Department
  - Finding ways of bridging the gap between science and public health policies

Caiaffa et al. JHU, 2014

## *Origin: Belo Horizonte*

6th largest city Brazil  
Population: 2,375,444  
Slum residents: 451.395  
(19%)  
186 informal settlements –  
5% of BH area

Households: 600,000  
Area: 331 km<sup>2</sup>  
Basic Sanitation:  
Water supply – 99.7%  
Garbage collection – 100.0%  
Sewage system – 93.0%



Monique Renne

*Salubal ancillary study: Health impact evaluation of the Vila Viva program in Belo Horizonte, Brazil*

- This ancillary study is nested to the BH-Viva Project that has been developing by Observatory for Urban Health team and partners
- Supported by the Salurbal project, funded by the Wellcome Trust

*Salubal ancillary study: Health impact evaluation of the Vila Viva program in Belo Horizonte, Brazil*

- To **complete the databases** compiled during the first phase of the **BH-Viva Project** (from 2002-2012) with **georeferenced information** on death, hospitalization, notifiable diseases and interventions **from 2013 up to 2019** for the entire city and two groups of informal settlements
- To evaluate the health impact of the **Vila Viva project** in Belo Horizonte using secondary data

## *The intervention: Vila Viva Program*

- The Vila Viva program is a comprehensive urban intervention in several informal settlements in Belo Horizonte
  - The program has been improving the living conditions of residents, enhancing public spaces, and implementing social programs

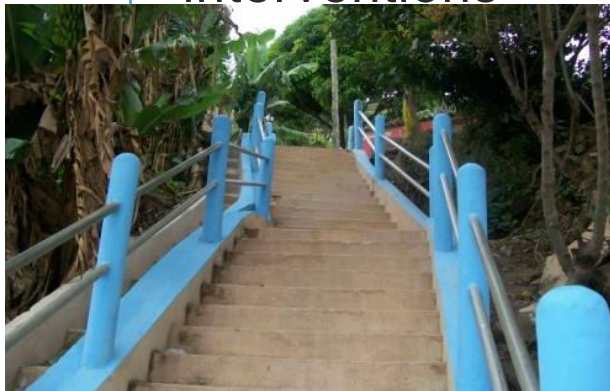


## *The Vila Viva place-based urban transformation interventions*

### Physical-environmental



- Housing
- Sanitation
- Parks and Leisure places
- Geological interventions



### Socio-organizational



- Educational, sanitary and environmental interventions
- Creation of job opportunities



### Legal



- Legalization of land tenure



# Vila Viva Program: Aglomerado da Serra





Aglomerado da Serra  
before the  
intervention



Source: Google images

Aglomerado da  
Serra  
after the  
intervention



Source: Google images

# SALUD URBANA EN AMÉRICA LATINA

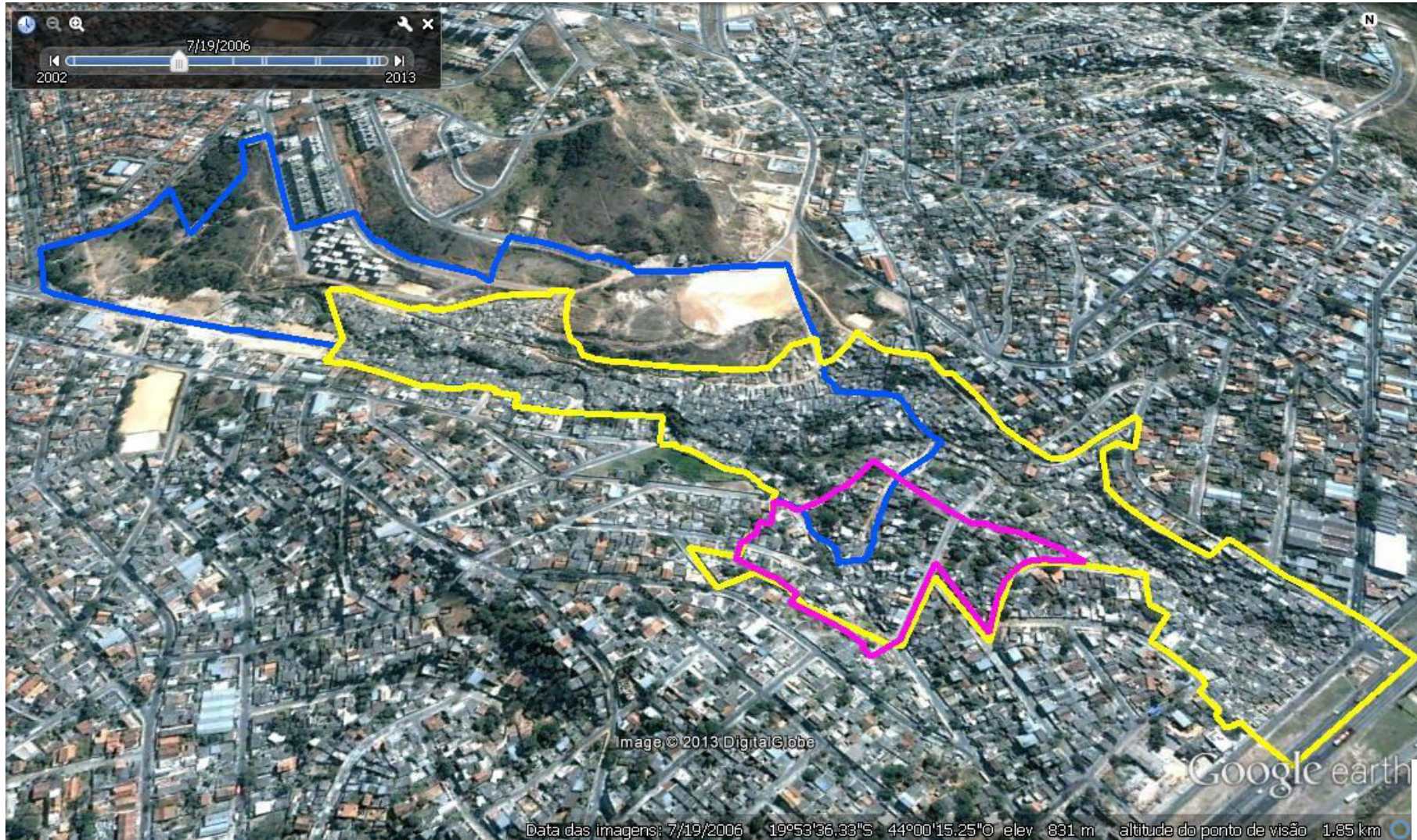
## Vila São José in November 2002



Google images + BH Viva study works' georeferencing

# SALUD URBANA EN AMÉRICA LATINA

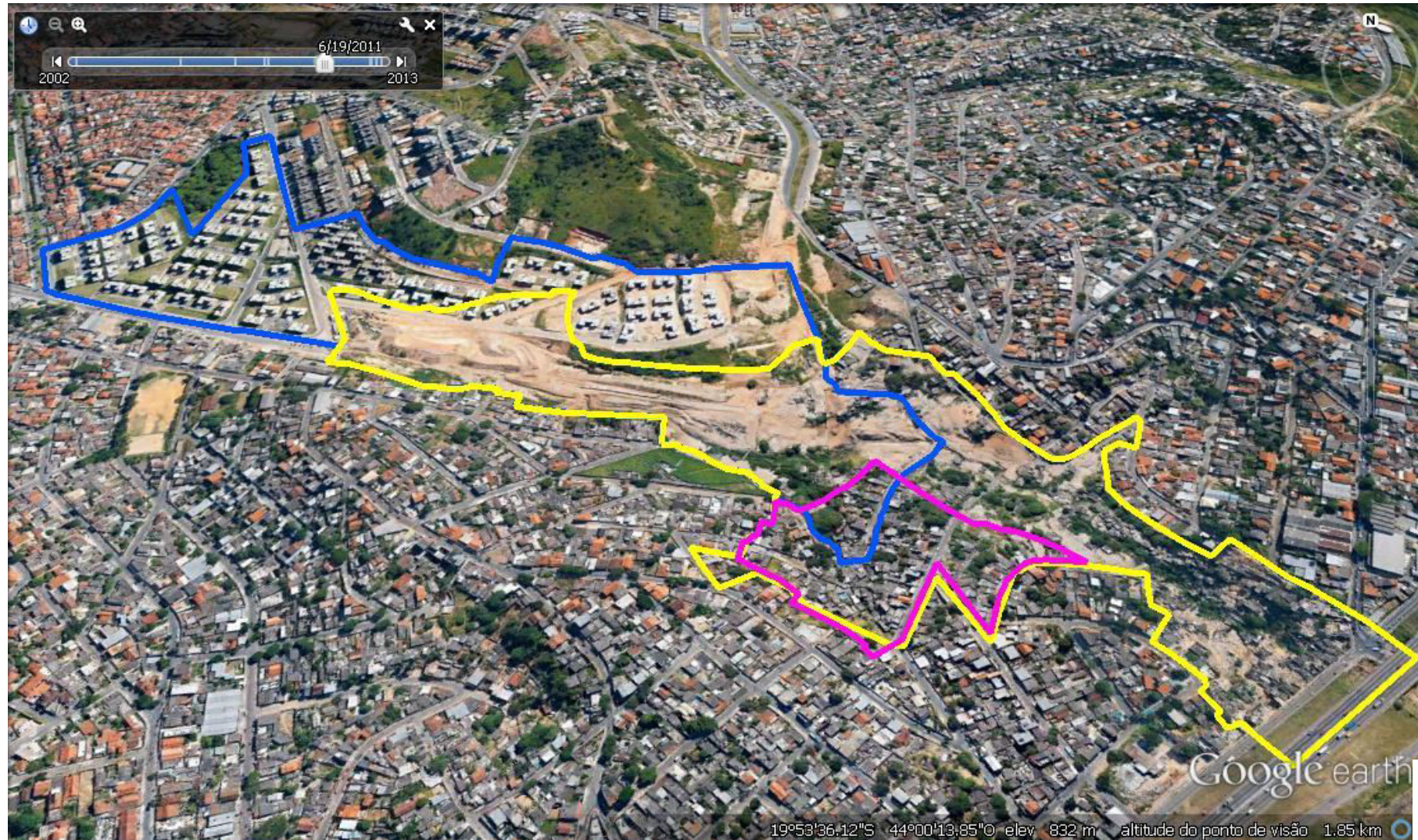
## Vila São José in July 2006



Google images + BH Viva study works' georeferencing

# SALUD URBANA EN AMÉRICA LATINA

## Vila São José in June 2011



Google images + BH Viva study works' georeferencing

# SALUD URBANA EN AMÉRICA LATINA

Vila São José in March 2013



*The evaluation: BH-Viva Project  
Observatory for Urban Health in Belo Horizonte*

- To assess the impact of the urban interventions done by the Vila Viva Program on the health and quality of life of people living in informal settlements
  - Vital events/hospitalizations
    - Asthma, Homicides, Pregnancy in adolescents
    - Dengue fever, others
  - Health behaviors
    - Social determinants of health
  - Social and Physical environment features



*A natural experiment study with mixed methods (quantitative and qualitative), using secondary information from a specially designed data warehouse (phase 1), primary data collection (phase 2), and expansion of health and a historical series of intervention data*

### Phase 1

Urban Health evaluation models from available secondary data

GIS Data Warehouse (DW) using available secondary databases

Papers and research projects: Methods, Asthma, Dengue, Homicides, Hospitalizations, etc

### Phase 2

Household survey based on urban health model in two slums: one intervened and one to be intervened

Qualitative study of community to evaluate the impact of interventions on health services and the population's health

Research projects on: Violence and Pregnancy in adolescents

### Phase 3 - 4

Systematic Social Observation of the study slums

Post-COVID-19 Household Survey and Qualitative study

Phase 3b - Salurbal ancillary study for 2<sup>nd</sup> data collection



2012  
(2002)

2013

2014

2015

2016

2017

2018

2019

2020

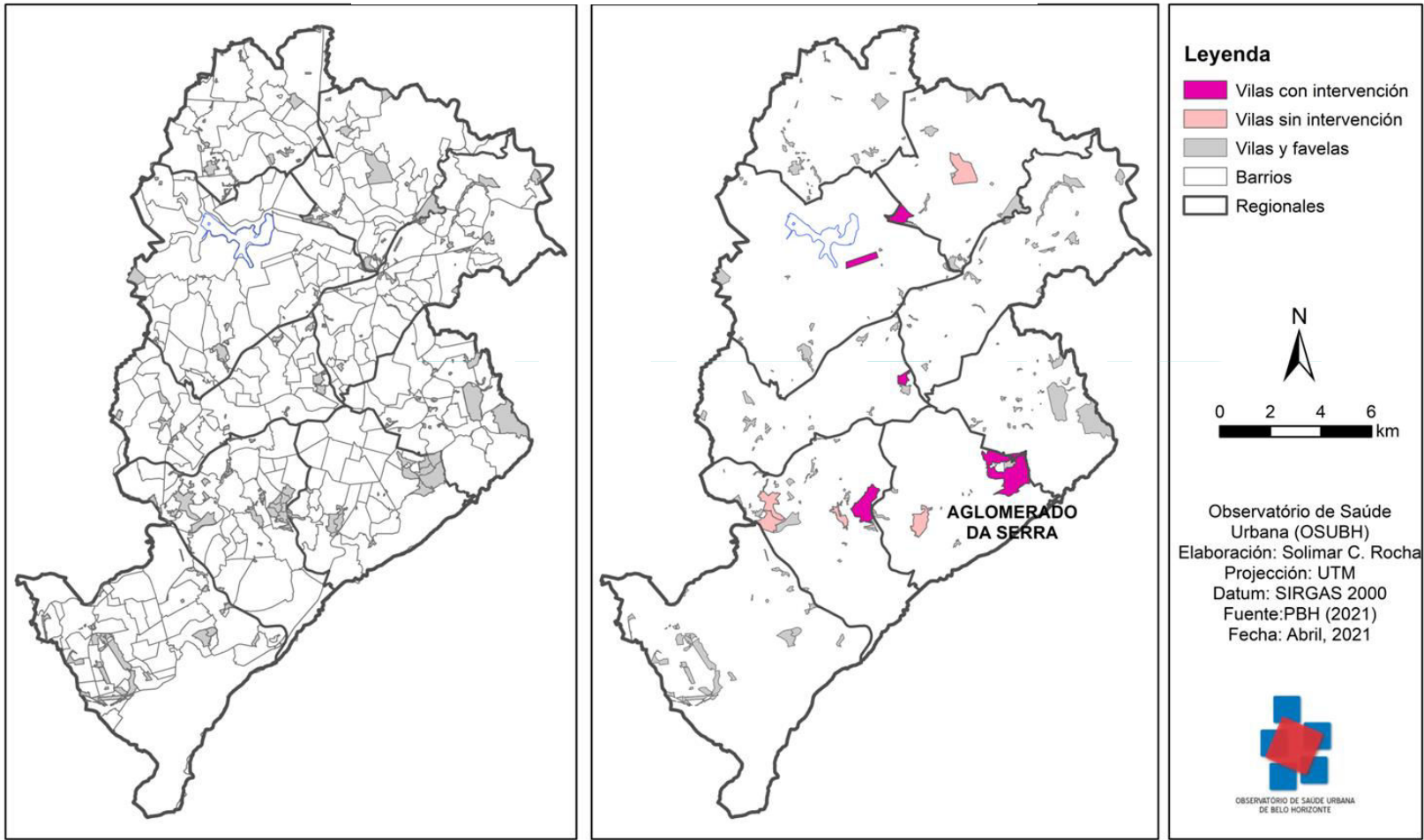
Understanding intervention and health impacts from different stakeholders' perspectives (urban and social policymakers, population in the slums and in the formal city) through:

1. Document analysis
2. Qualitative study of stakeholders and community involved in the participatory process since beginning

Monitor and measure the impact of interventions on segments in slums with different intervention times and their surroundings



### Informal settlement selection BH-Viva Project



#### Intervened areas

- Aglomerado da Serra
- Morro das Pedras
- Pedreira Prado Lopes
- São José
- São Tomaz

#### Non-Intervened areas

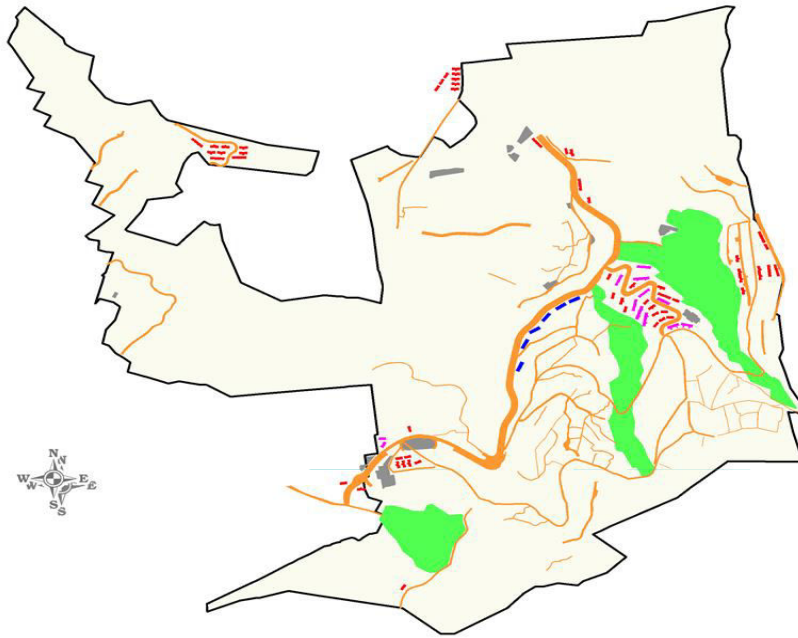
- Cabana Pai Tomás
- Ventosa
- Santa Lúcia
- Jardim Felicidade
- Vila Vista Alegre

*Intervention Data*

ID_OBRA	ID_TIOBRA	TIOBRA	ID_PROJETO	NO_CAMADA	ID_BENEF	VILA_BENEF	END_OBRA	PROGRAMA
86	2	Moradia	5	SAO JOSE	5	SAO JOSE	GEOLOGOS, 50	PAC PPI
87	2	Moradia	5	SAO JOSE	5	SAO JOSE	GEOLOGOS, 250	PAC PPI
91	2	Moradia	5	SAO JOSE	5	SAO JOSE	GRANDE OTELO, 83	PAC PPI
92	2	Moradia	5	SAO JOSE	5	SAO JOSE	GRANDE OTELO, 143	PAC PPI
112	3	Equipamento Publico	5	SAO JOSE	5	SAO JOSE	CRISTIANO PEREIRA SALGADO, SN	PAC PPI
113	3	Equipamento Publico	5	SAO JOSE	5	SAO JOSE	JOAQUIM JOSE RIBEIRO, SN	PAC PPI
114	3	Equipamento Publico	5	SAO JOSE	5	SAO JOSE	CRISTIANO PEREIRA SALGADO, SN	SUDECAP
115	1	Intervencoes em Via	5	SAO JOSE	5	SAO JOSE	RUA ANTONIETA MARIA DE JESUS	PAC
116	1	Intervencoes em Via	5	SAO JOSE	5	SAO JOSE	RUA CRISTIANO PEREIRA SALGADO	PAC
117	1	Intervencoes em Via	5	SAO JOSE	5	SAO JOSE	RUA CRUCIFICACAO	PAC
118	1	Intervencoes em Via	5	SAO JOSE	5	SAO JOSE	RUA DA FLAGELACAO	PAC

Mapping  
the intervention

OBRAS VILA VIVA AGLOMERADO DA SERRA



**Obras Serra**

■ Equipamento Publico	(15)
■ Intervencoes em Via	(34)
■ Parque	(3)
■ Predio com 8 apartamentos	(66)
■ Predio com 12 apartamentos	(6)
■ Predio com 16 apartamentos	(11)

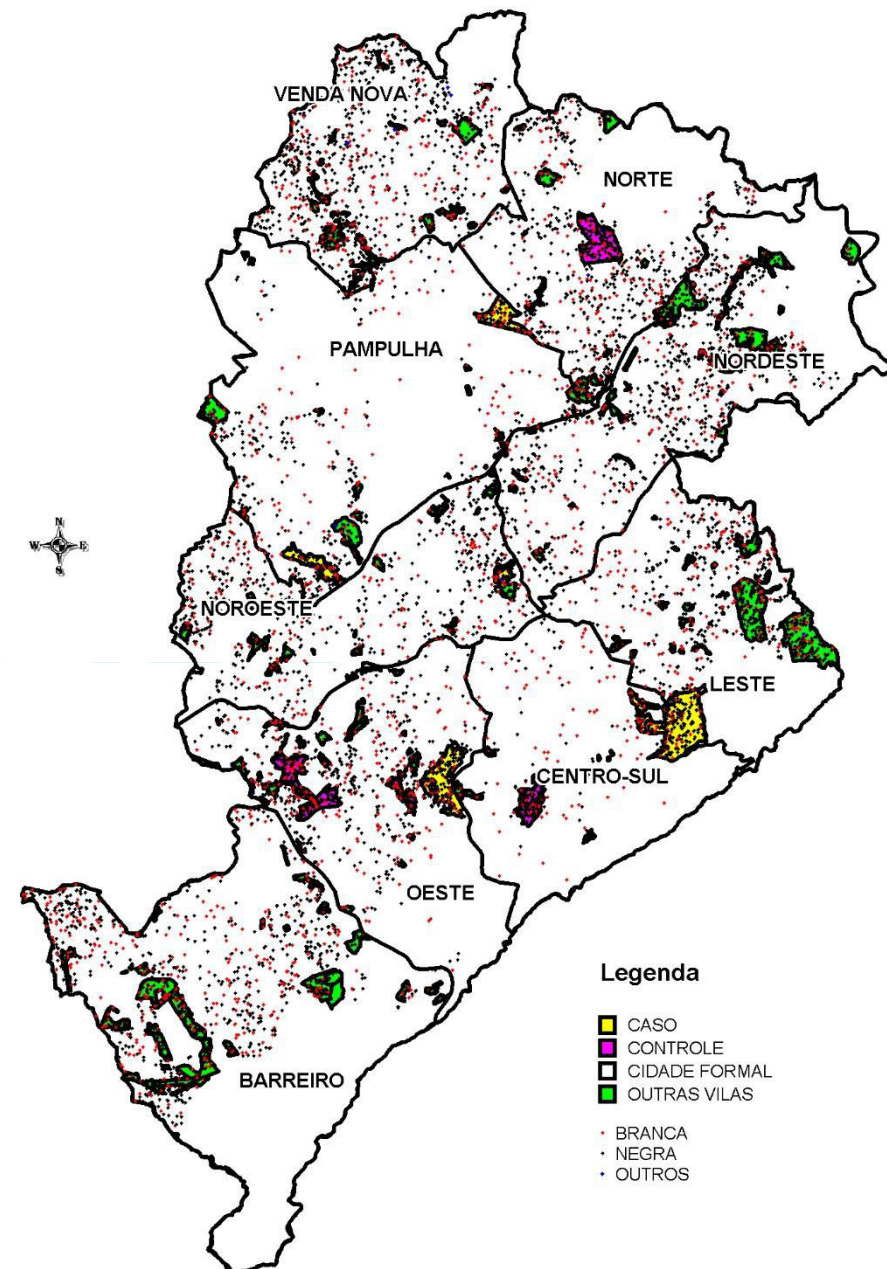
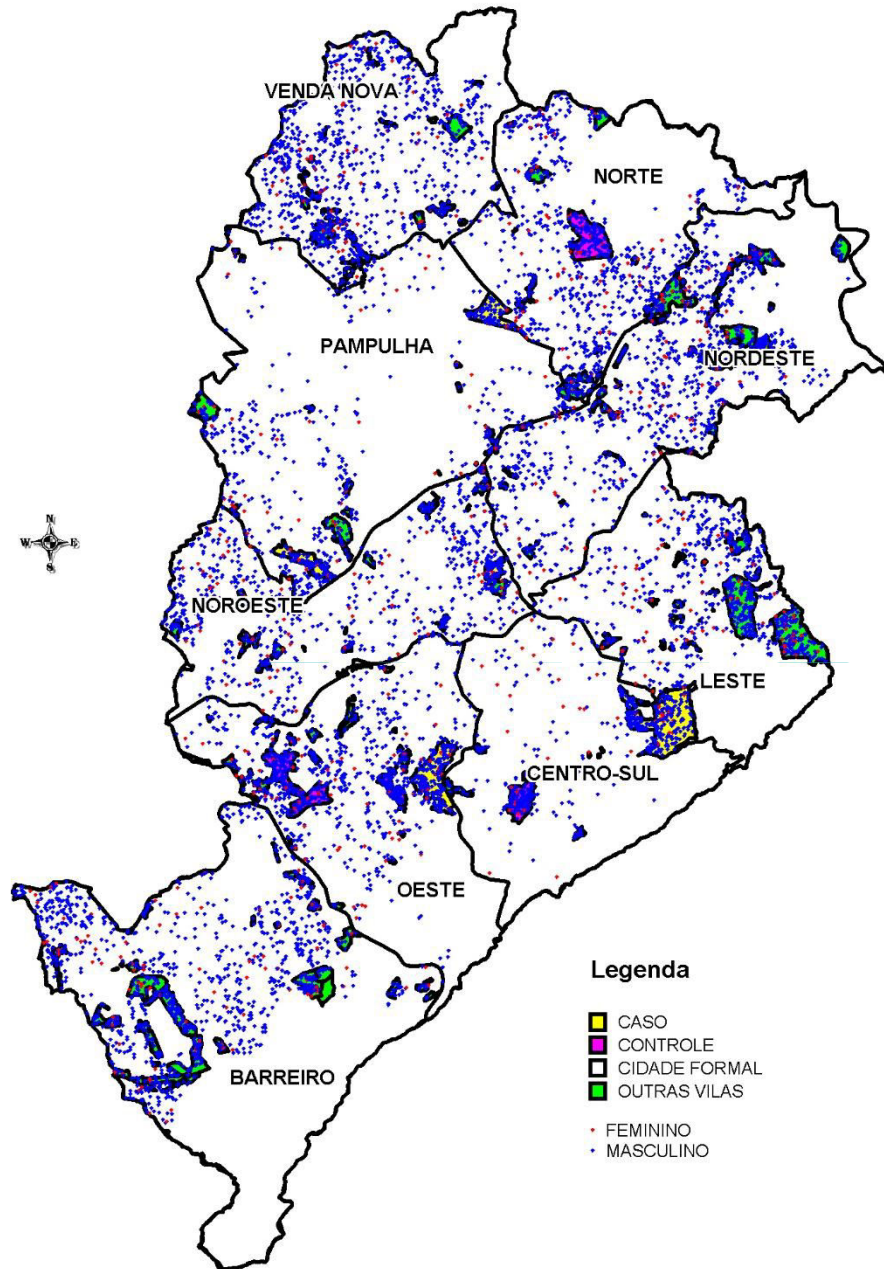
OBRAS VILA VIVA SAO JOSE



**Obras Sao Jose**

■ Equipamento Publico	(4)
■ Intervencoes em Via	(55)
■ Predio com 16 apartamentos	(1)
■ Predio com 32 apartamentos	(6)
■ Predio com 48 apartamentos	(6)
■ Predio com 64 apartamentos	(4)
■ Predio com 80 apartamentos	(5)
■ Predio com 96 apartamentos	(3)
■ Predio com 112 apartamentos	(1)
■ Predio com 208 apartamentos	(1)

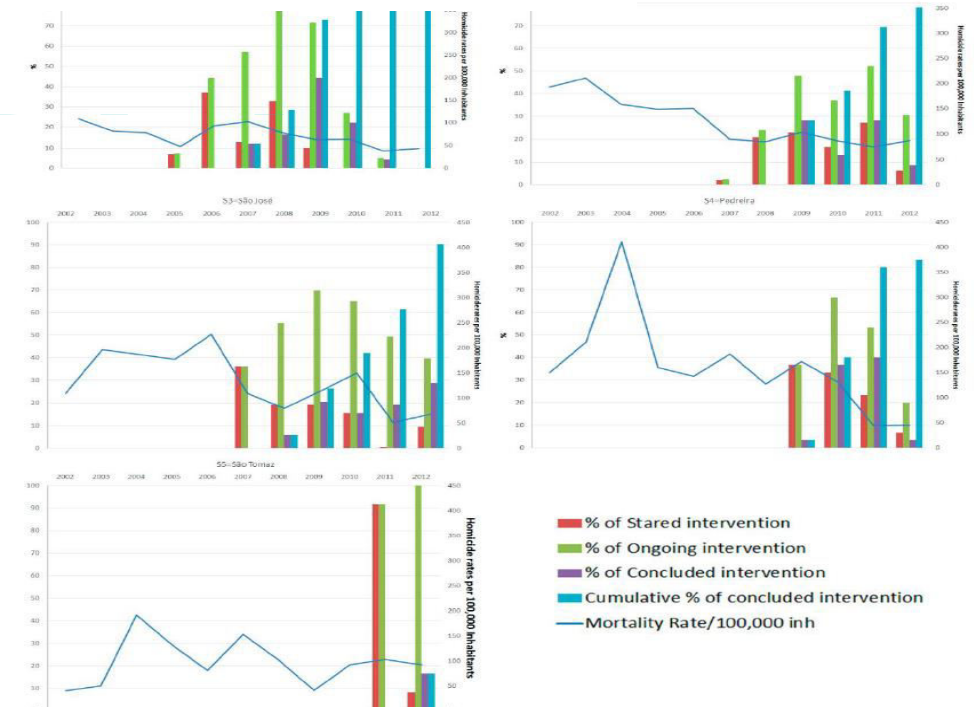
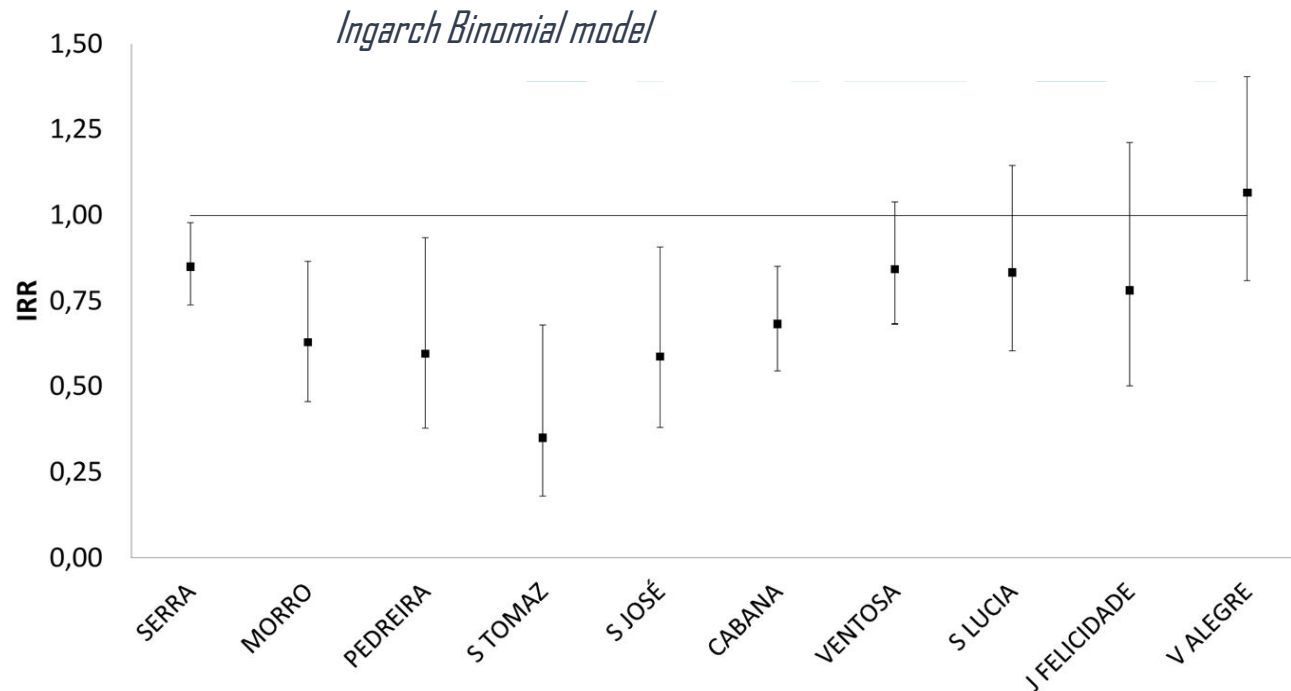
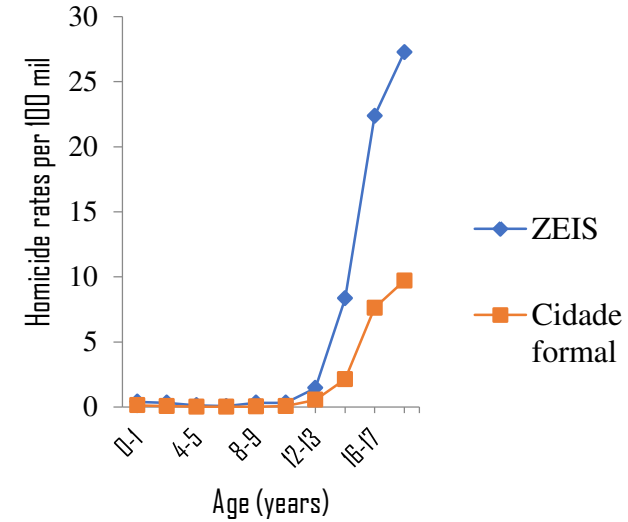
*Homicide rates by sex and race*



Article

# Mortality from Homicides in Slums in the City of Belo Horizonte, Brazil: An Evaluation of the Impact of a Re-Urbanization Project

Maria Angélica de Salles Dias <sup>1,2,\*</sup>, Amélia Augusta de Lima Friche <sup>1,2</sup>,  
Sueli Aparecida Mingoti <sup>3</sup>, Dário Alves da Silva Costa <sup>1</sup>, Amanda Cristina de Souza Andrade <sup>1,4</sup>,  
Fernando Márcio Freire <sup>5</sup>, Veneza Berenice de Oliveira <sup>1</sup> and Waleska Teixeira Caiaffa <sup>1,2</sup>



- Through the Salurbal ancillary funding, we have updated and georeferencing of all databases from 2013 up to 2019 on:
  - Mortality (Deaths Information System - SIM)
  - Morbidity (Hospitalization Information System – SIH)
  - Live births (Live births Information System – SINASC)
  - Dengue fever (Notifiable Diseases System – SINAN)
  - Urban transformation interventions – collected at local offices from URBEL

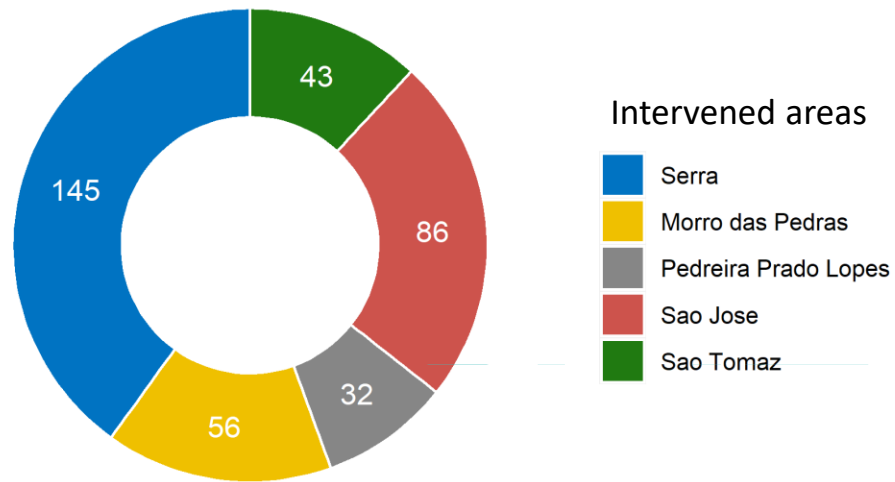
*Salurbal Ancillary Study - Methods**Homicides*

- Differences-in-differences (DiD) analysis
- Sample
  - 5 intervened areas (Serra, Morro das Pedras, Pedreira Prado Lopes, São Tomaz and São José), 5 non-intervened areas (Cabana, Ventosa, Santa Lúcia, Jardim Felicidade and Vila Vista Alegre) and the formal city of Belo Horizonte (municipality minus the other informal settlements in the city)
- Outcome
  - Yearly homicide (ICD-10 codes X85 to Y09) rates, by area
- Exposure
  - Starting year of intervention jobs (2005 for Serra, 2007 for Morro das Pedras and São José, 2009 for Pedreira Prado Lopes and 2011 for São Tomaz)

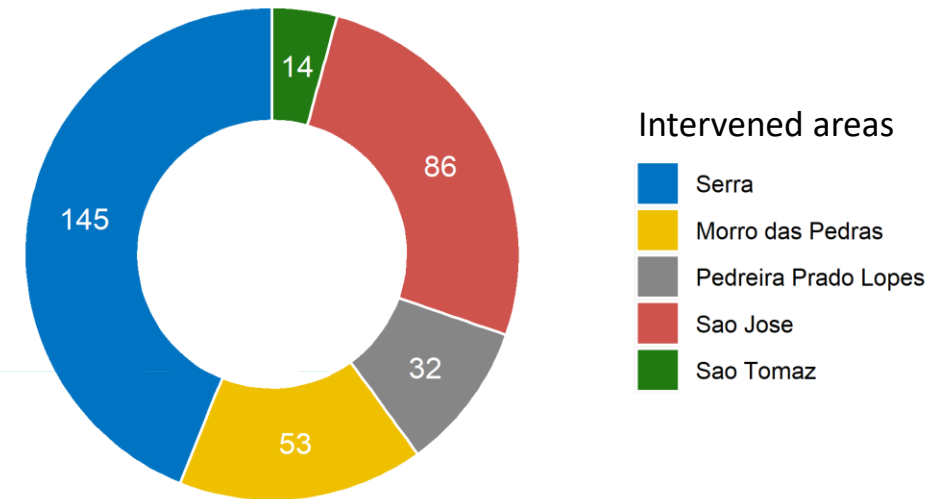
- Using mixed Negative Binomial regression with homicide rates as the outcome and the intervention effect as the exposure
  - including area-level and time period random intercepts to account for unobserved longitudinal effects
- Sensitivity analysis: lagged starting year of intervention jobs' by 1-7 years
  - e.g. Serra jobs start in 2005, so we re-estimate the model as if interventions started in 2006 through 2012



Total number of intervention jobs\*, by area



Number of finished intervention jobs\*, by area

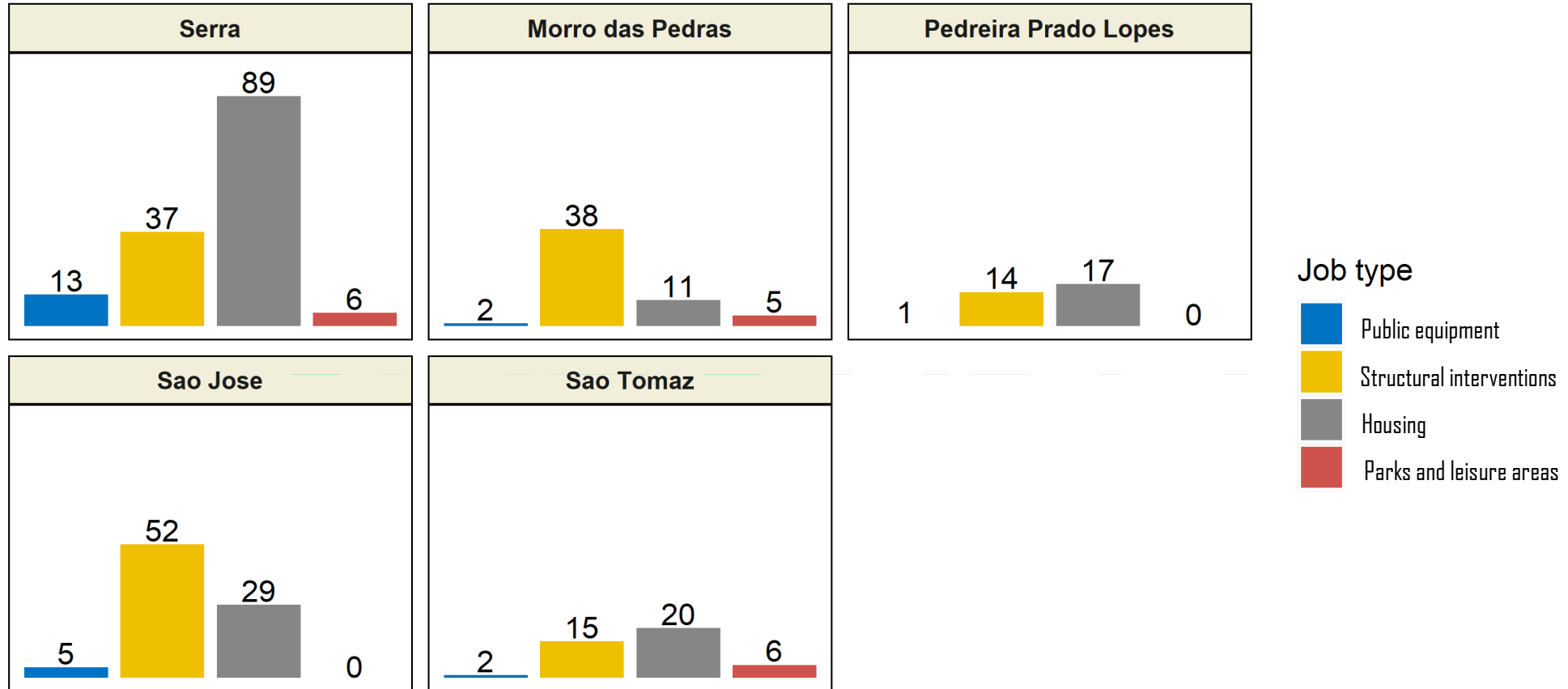


\*starting years of jobs are 2005 (Serra), 2007 (Morro das Pedras & Sao Jose), 2009 (Pedreira Prado Lopes) and 2011 (Sao Tomaz)

\*29 unfinished jobs in Sao Tomaz and 3 in Morro das Pedras

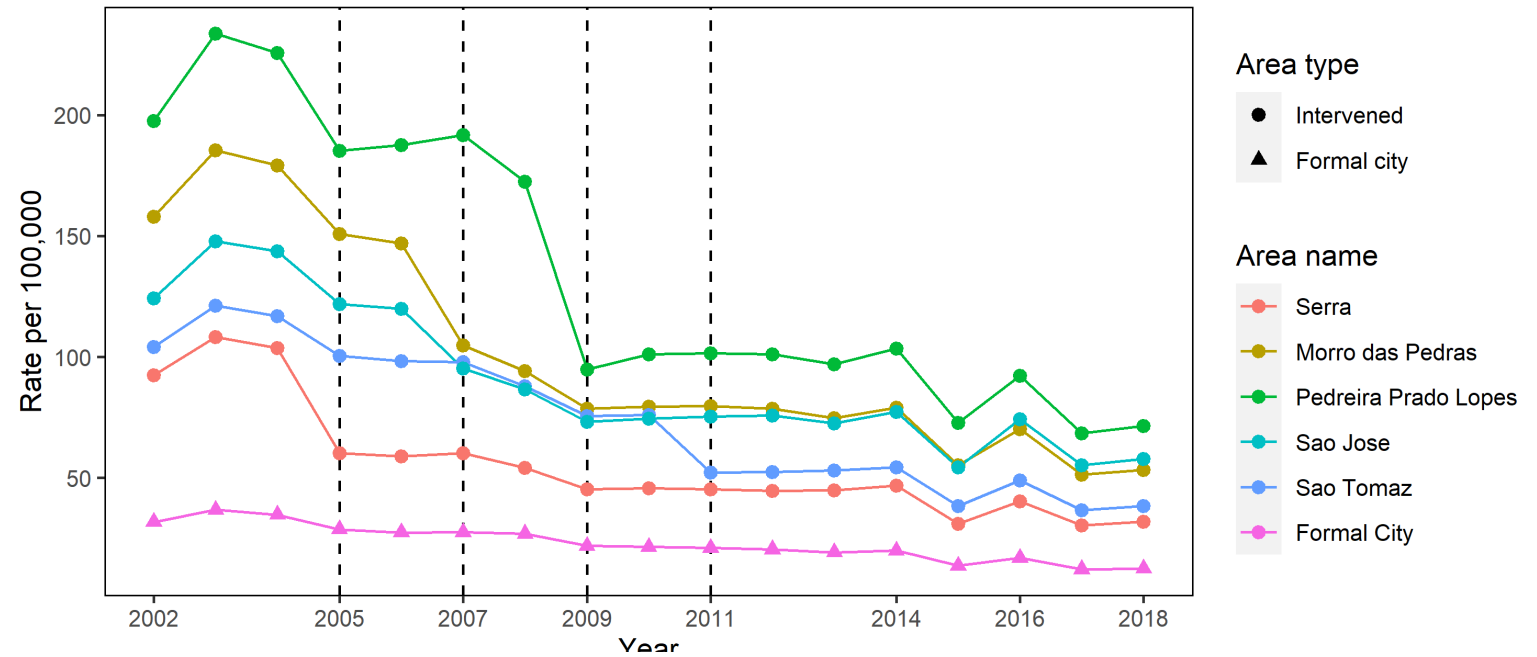
Interventions

Total number of intervention jobs, by type and area

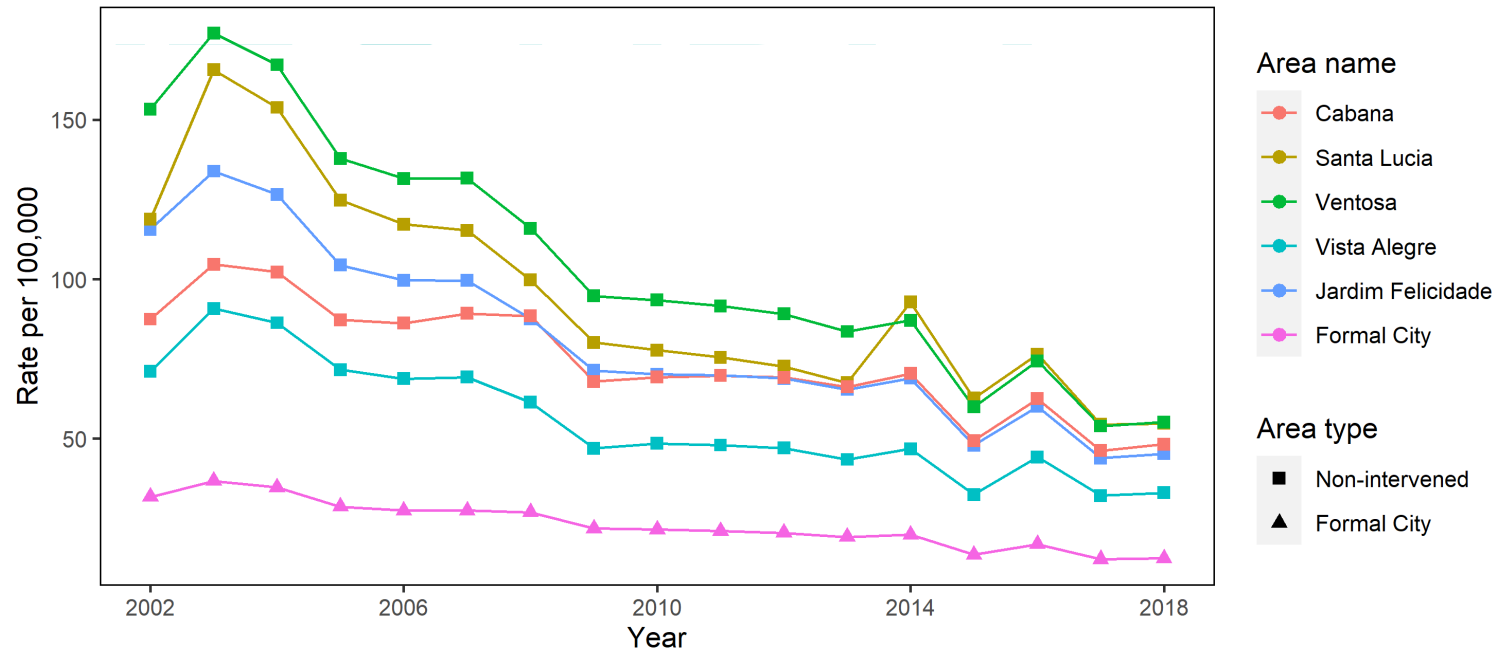


*BH-Viva - Phase 3*  
*Salurbal Ancillary Study*  
*Preliminary results*  
**Homicides**

DiD model fitted homicide rates (intervened slums), by area and year

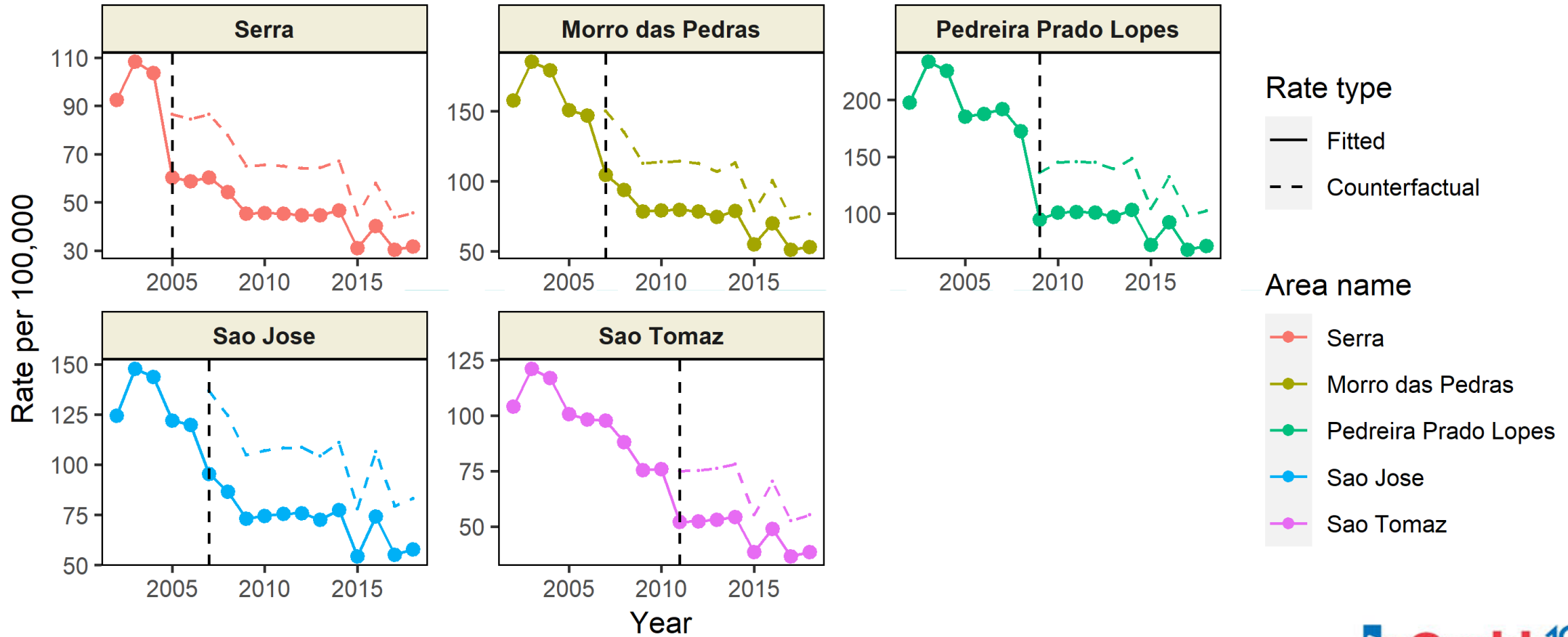


DiD model fitted homicide rates (non-intervened slums), by area and year



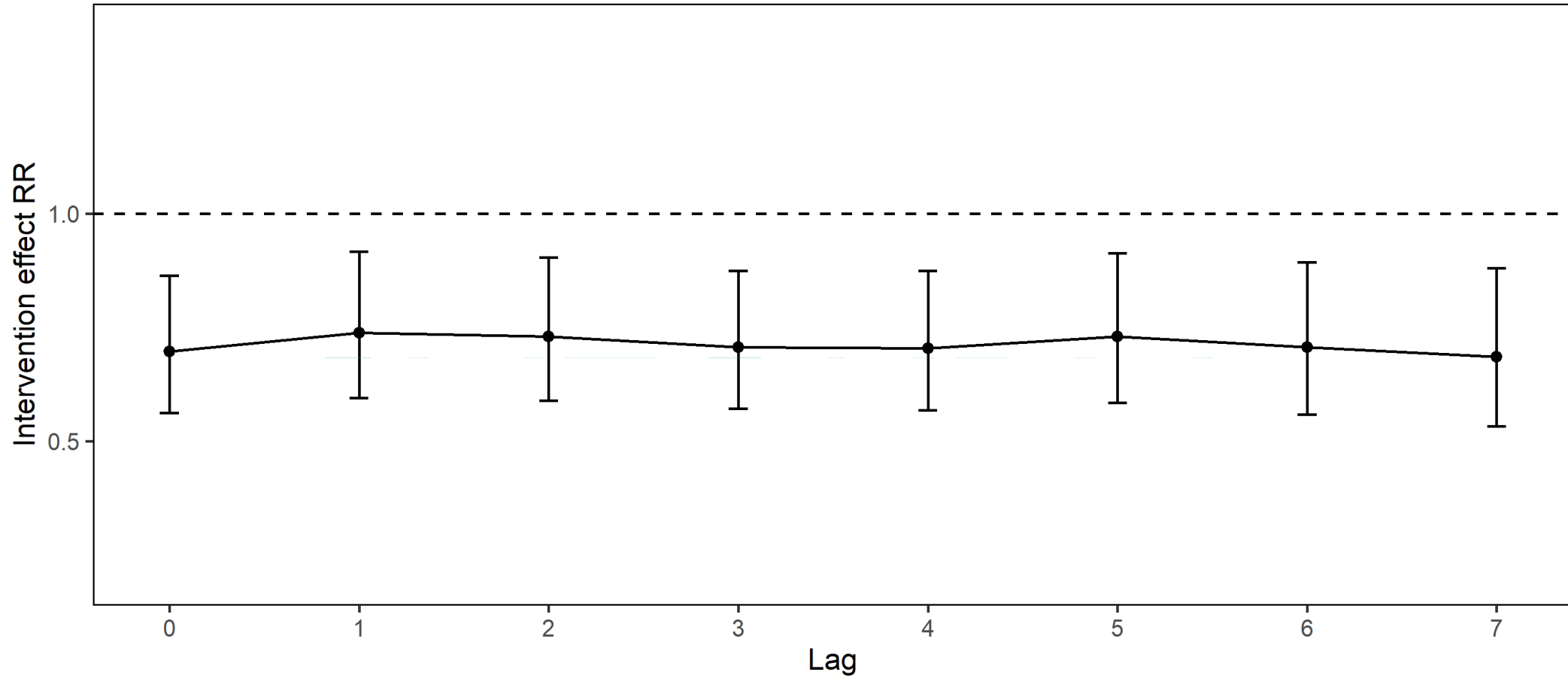
Salurbal Ancillary Study - Preliminary results *Homicides*

DiD model fitted vs. counterfactual homicide rates, by area and year  
 intervention effect RR 0.70, 95% CI (0.56, 0.86)



Salurbal Ancillary Study - Preliminary results *Homicides*

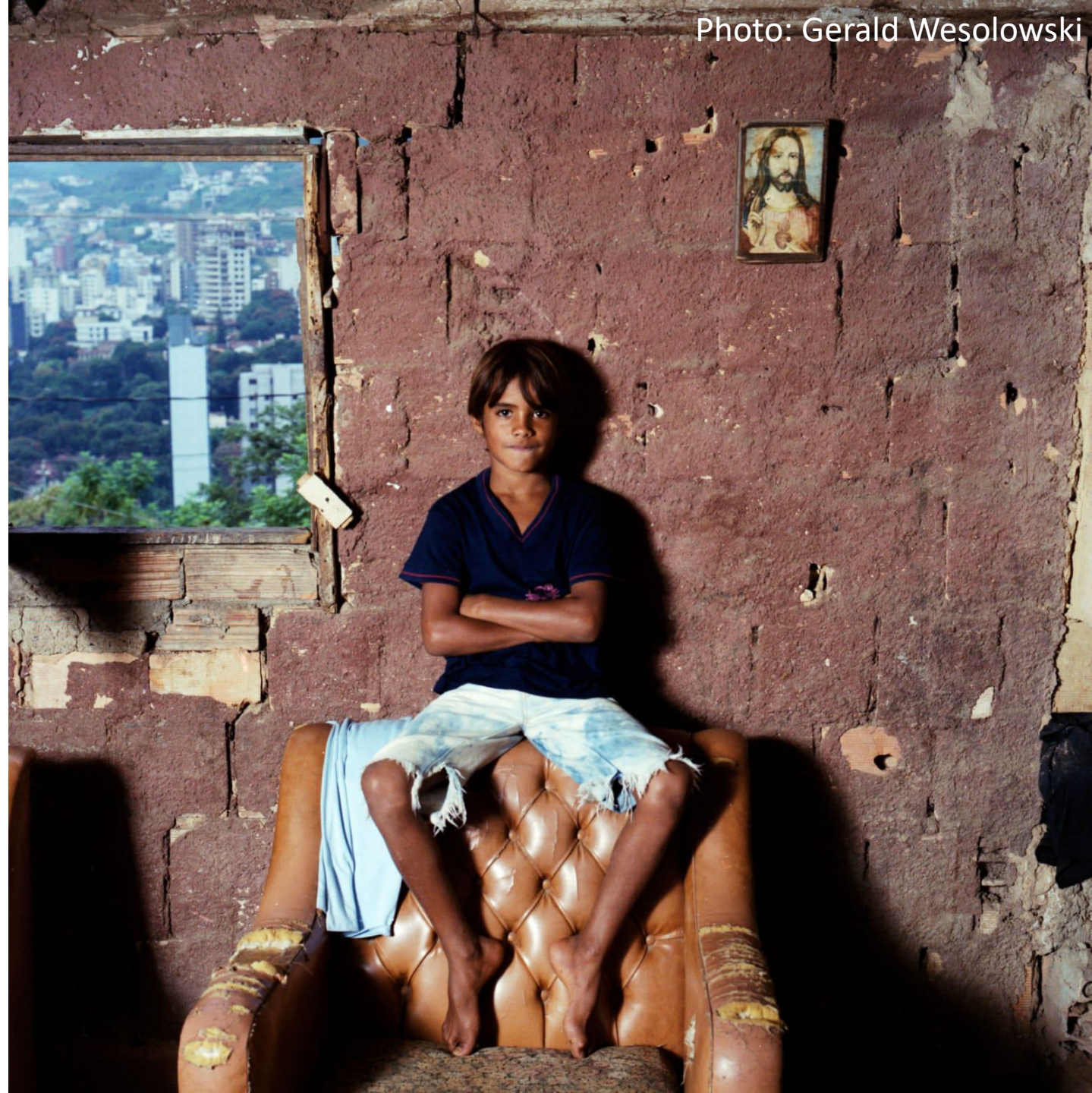
Homicides DiD models: lagged intervention RRs and 95% CIs



- The urban transformations from the Vila Viva Program seems to have influenced the decrease of homicide rates
  - Homicides are related to social and physical environment, as drug traffic and other social ties in the alive territory
- Further analyses are needed to account for confounders like health, safety and social policies, as the *Bolsa Família Program*, besides the economic and political crises that might have happened during the study period
- These preliminary results highlight the relevance of local and multisectorial policies to mitigate the violent deaths in urban vulnerable areas and to reduce inequities in urban scenarios.

## *BH-Viva Salurbal Ancillary Study Acknowledgments*

- OSUBH Team
  - UFMG
  - Urbel
- Brazilian Ministry of Health
  - CNPq
  - FioCruz
- Salurbal Project
- Welcome Trust
- ICUH organizers



*Gracias!*

*Obrigada!*



gutafriche@gmail.com



# LEARN MORE AND CONTACT US



*LACURBANHEALTH.ORG*  
*SALURBAL@DREXEL.EDU*

**FOLLOW US**

*@LACURBANHEALTH*

